

Sahibi Hasan Can

(MEHTER)

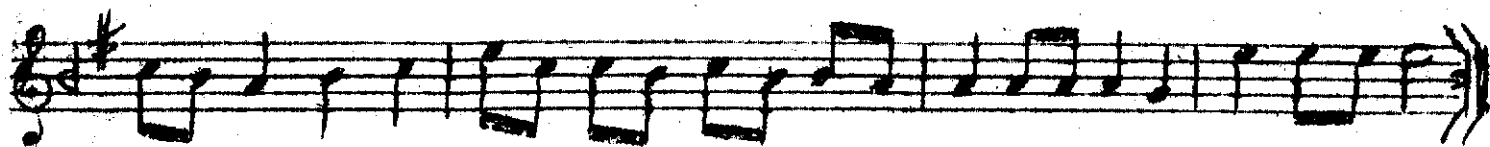
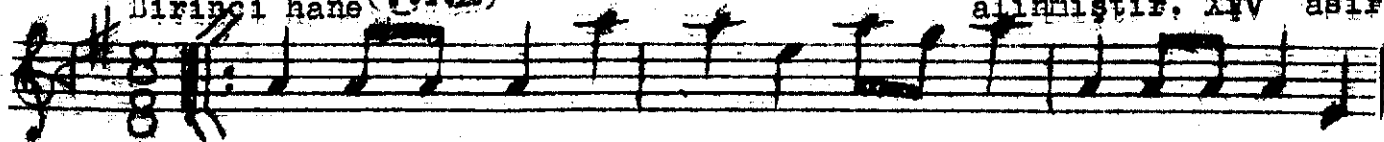
HÜSEYİNİ

NS 1

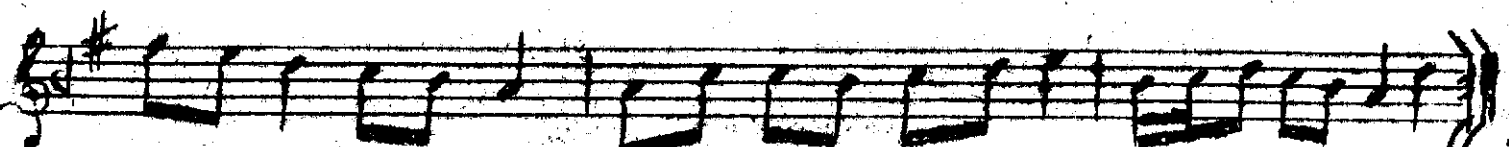
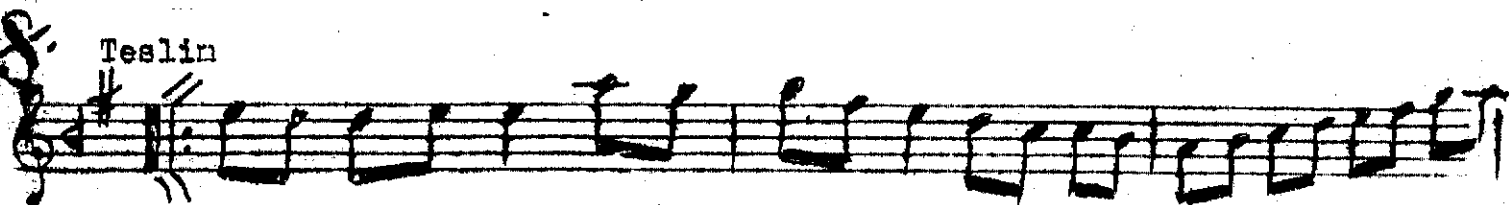
Sahibi Hasan Can

Ali Ufki Külliyyatin dan
alınmıştır. XV asır.

Birinci hane (B-420)



Testlin

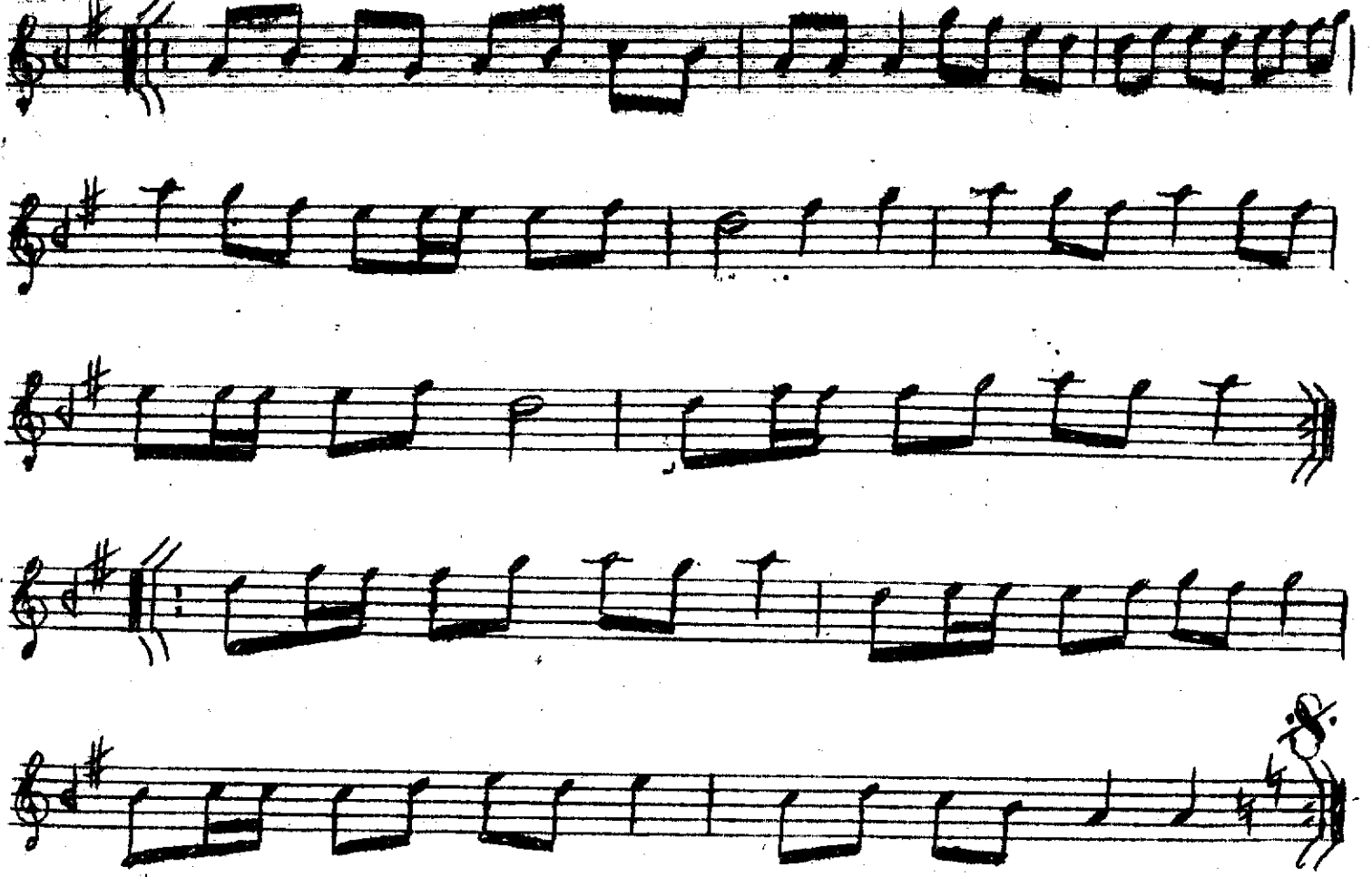


Hüseyinî (MEHTER)

2.

A musical score for the piece "Hüseyinî (MEHTER)". The score is written on ten staves, each beginning with a treble clef and a key signature of one sharp (F#). The notation includes various rhythmic values, primarily eighth and sixteenth notes, often beamed together in groups. The first staff begins with a double bar line and a repeat sign. The seventh staff features a first ending bracket labeled "1" and a second ending bracket labeled "2". The piece concludes with the word "Son." at the end of the tenth staff. Below the final staff, there is a long horizontal line with an arrow pointing to the right, indicating the continuation of the piece.

İkinci hanç'



Üçüncü Hane



Not: Hasan Can Çaldıran seferinden sonra
Yavuz Sultan Selim tarafından İstanbul
getirilmiş ve Padişahın Nedini olma
Padişahın ölümünde başı ucunda bulmuş